

# MAJELLA CATHOLIC PRIMARY SCHOOL, BALGA

Strategic Plan 2019 - 2021





## MESSAGE FROM THE PRINCIPAL

It is my pleasure to present to you our new *Strategic Plan 2019-2021*. As a Catholic primary school located in Balga, the school proudly focuses on living up to its mission of “Transforming the lives of all its people”. The school community is culturally diverse and necessitates a broad and holistic approach in order to meet the needs of students. To do this within an ever-changing society however, is not easy and requires regular reflection on our direction and offerings. This has been done over the past six months leading to this Plan.

In formulating this Plan, the School Board and staff have assessed many features of the school’s journey to date, including how well we are going as a school and what are the emerging challenges, trends and opportunities likely to be faced in the future. The Plan acknowledges that there is much research indicating:

- the positive, long-term effect of quality early learning on the educational, social and health outcomes of children in later life;
- that English language proficiency is crucial to the social and economic participation of community members, especially new arrivals to Australia;
- that student experience of traumatic events in their lives can have a significant impact on their long-term health and well-being; and
- that a holistic approach to education, care, health and well-being is critical to the development of children.

This Plan outlines our focus in meeting these challenges. At the same time, it also recognises the new *Strategic Directions 2019-2021* of the Catholic Education Commission of WA (CECWA) and their call to develop Christ-centred leaders and be a Catholic school of excellence, a Pastoral Catholic community and finally an accessible, affordable and sustainable school.

I look forward to continuing to work in partnership with parents as we bring this new Plan to life and continue to provide an outstanding Catholic education in our community.

Mr David Barns  
Principal

### OUR VISION AND MISSION

As a primary school, operating in the context of Australian schooling we are committed to equity and excellence and to providing a safe and welcoming environment for all. At the same time as a Catholic school, we are guided by the call of our Bishops to form young Christian men and women who live out Gospel values.

Our vision is for Majella Catholic Primary School to be a just and inclusive community where the dignity and goodness of each person is respected.

Our Mission is modelled on Jesus Christ and the spirit of Mercy. At Majella Catholic Primary School, we seek to,

*transform the lives of all its people*

### OUR CORE VALUES

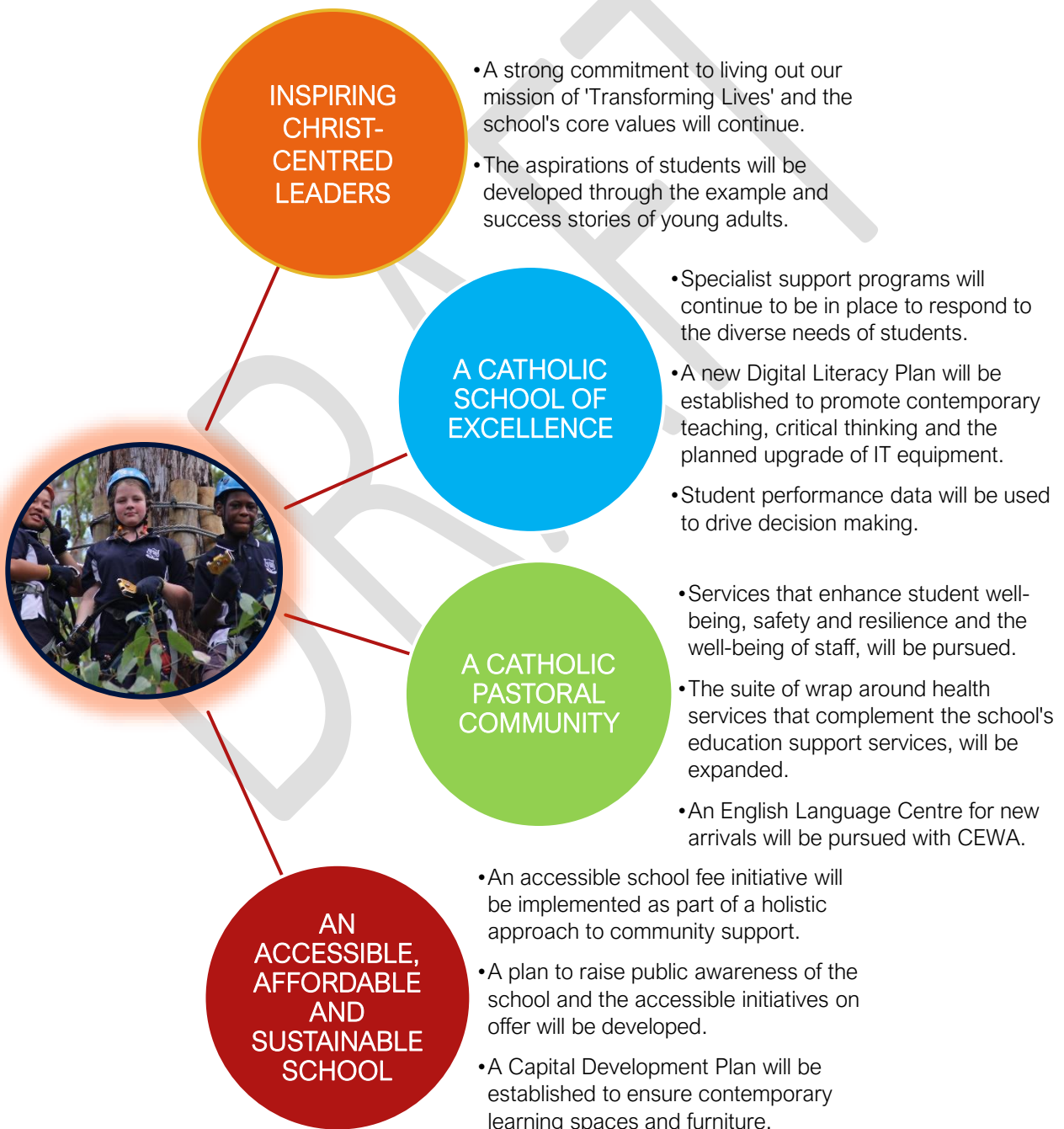
As we strive to bring our mission to life, the following core values will underpin our work:

- Justice
- Compassion
- Respect
- Inclusion
- Service

## OUR GOALS & ACTIONS

### *THE OUTCOMES WE SEEK and MEASURES OF SUCCESS*

- GOAL 1:** CHRIST-CENTRED LEADERS – formation opportunities are provided that respond to the need and aspirations of individual community members and the broader Church.
- GOAL 2:** A CATHOLIC SCHOOL OF EXCELLENCE – students are well prepared academically, socially and emotionally for the transition to secondary schooling.
- GOAL 3:** A CATHOLIC PASTORAL COMMUNITY – a diverse and connected community is supported with services that promote education, health and well-being.
- GOAL 4:** AN ACCESSIBLE, AFFORDABLE AND SUSTAINABLE SCHOOL – a suite of complementary initiatives helps maintain and grow enrolment numbers.





## MAJELLA CATHOLIC PRIMARY SCHOOL

9 Finchley Crescent, Balga WA 6061

Ph: (08) 9207 7500

Email: [admin@majella.wa.edu.au](mailto:admin@majella.wa.edu.au)

Template prepared and copyright of



**THORNE CONSULTING**  
STRATEGY - PLANNING - LEADER DEVELOPMENT